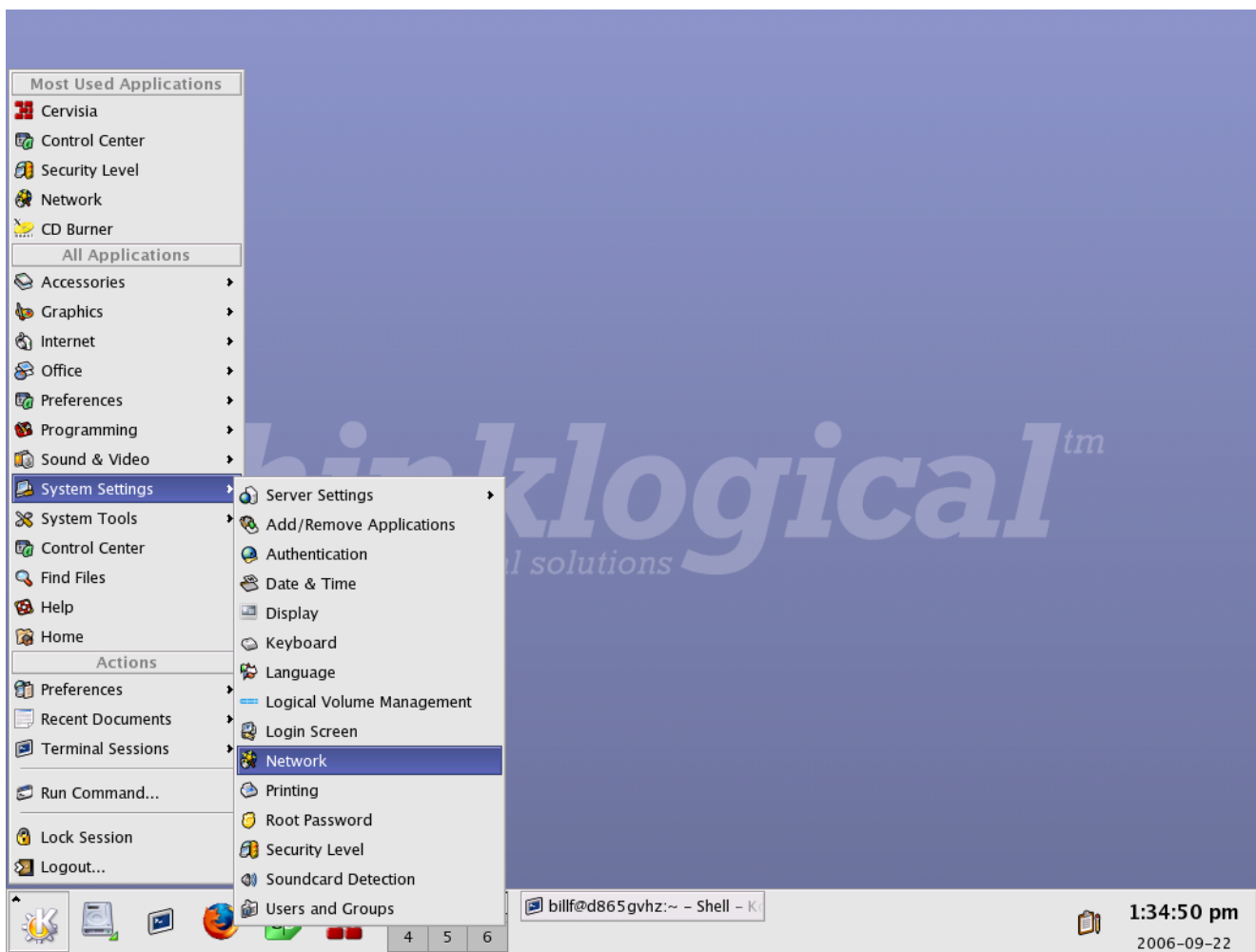


Configuring the DCS Network

Unless specified by the customer, the DCS is shipped with the network enabled, and configured to use DHCP to get it's IP address. If you wish to use static IP addresses, you must reconfigure the DCS. Each DCS must be configured separately. Also, if you can not use DNS to assign names to the IP addresses, you must configure the /etc/hosts file on the DCS that is running the DCS Web Interface (typically the video DCS).

The following is a series of screen captures showing the steps needed to configure the network.

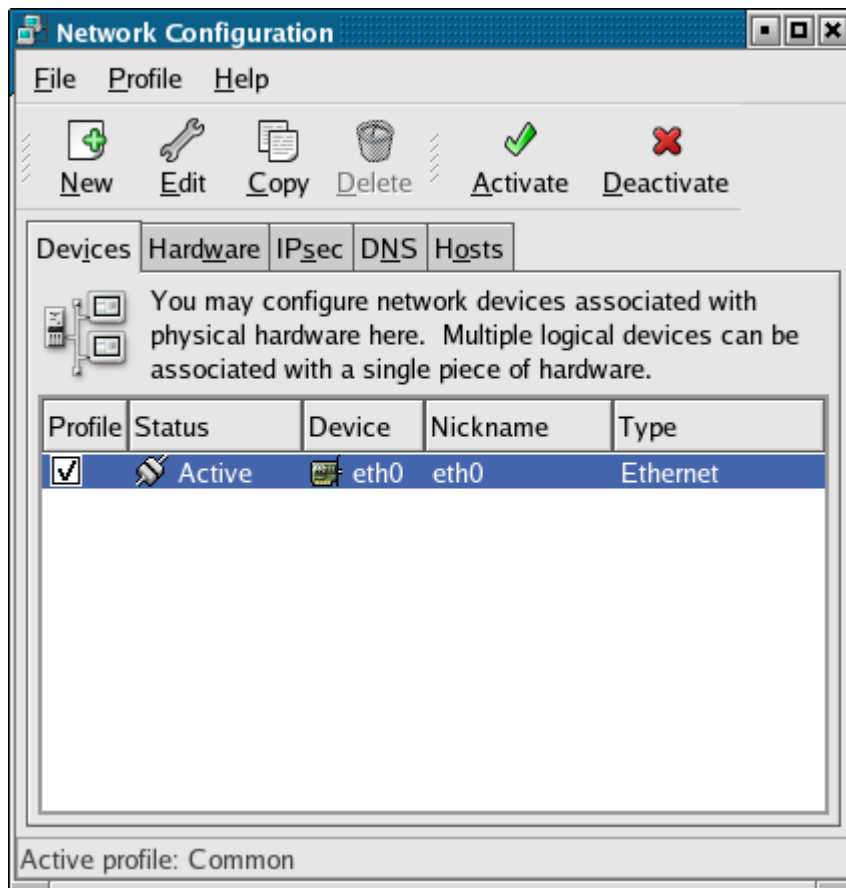
The first image shows the menu item that will bring up the network configuration tool.



It is System Settings / Network.

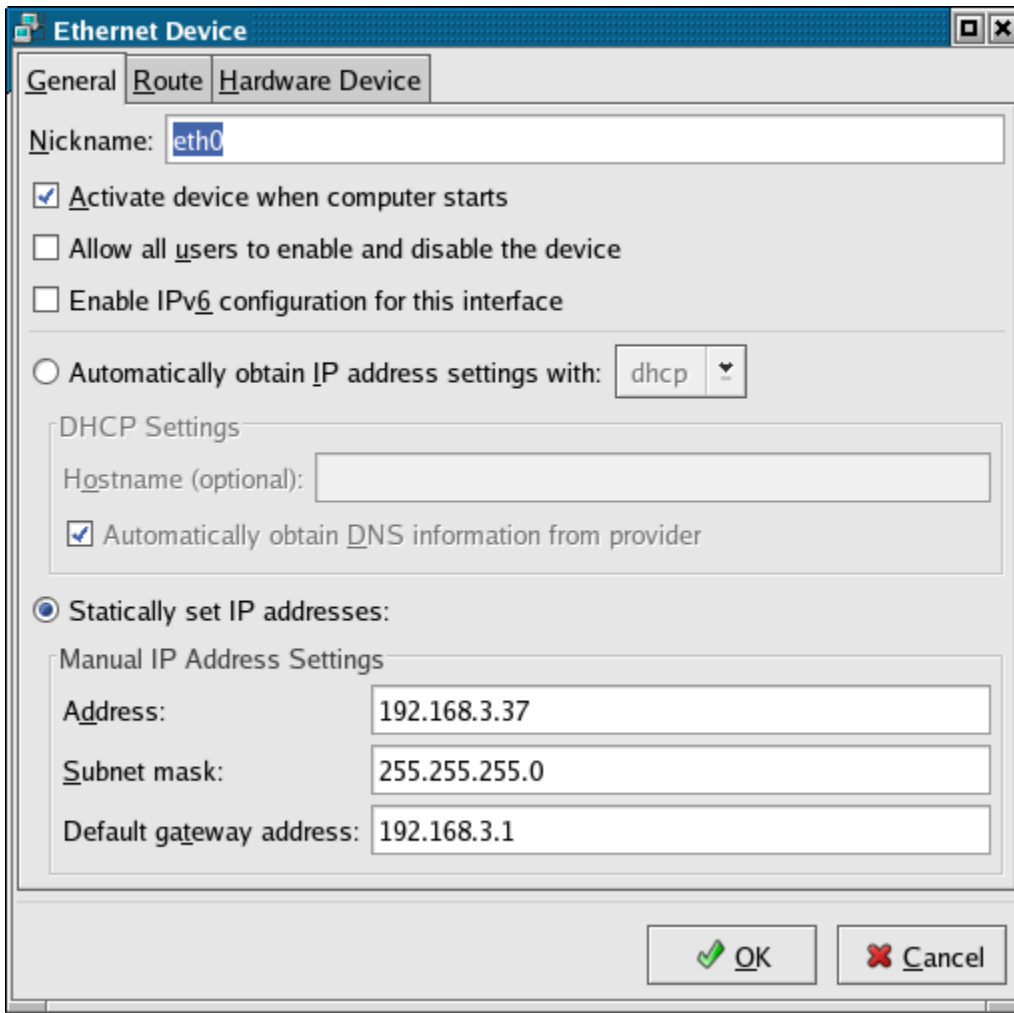
Configuring the DCS Network

If eth0 is not highlighted, then select it and then select Edit (the wrench icon).



Configuring the DCS Network

The Edit button will bring up this page:



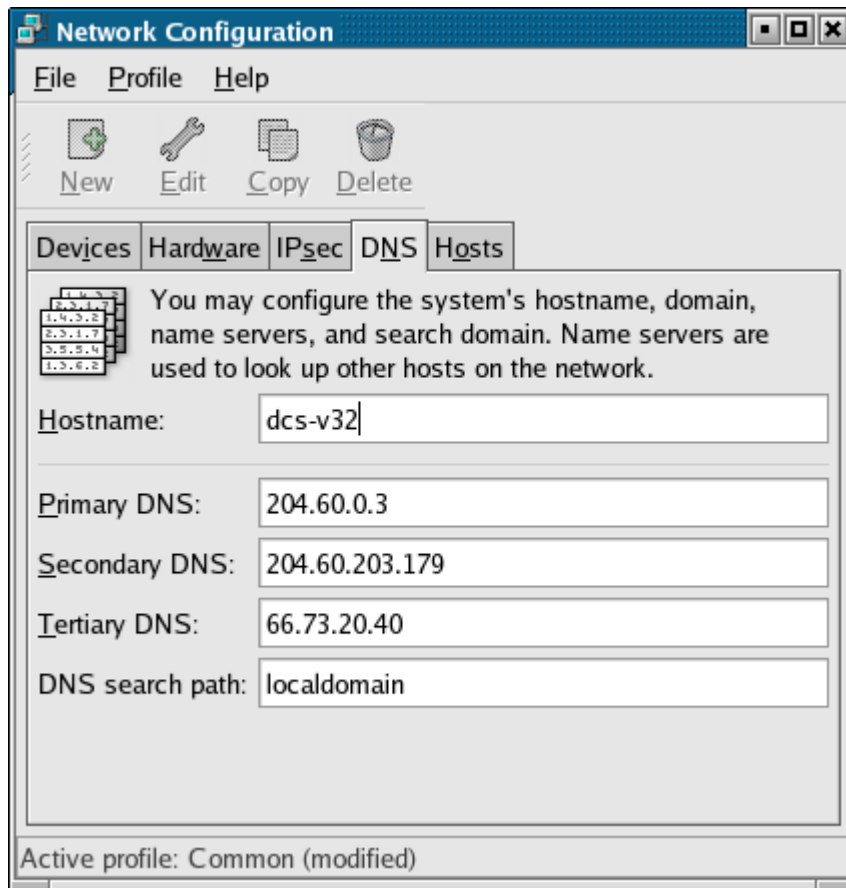
The screenshot shows a window titled "Ethernet Device" with three tabs: "General", "Route", and "Hardware Device". The "General" tab is active. The "Nickname" field contains "eth0". There are three checkboxes: "Activate device when computer starts" (checked), "Allow all users to enable and disable the device" (unchecked), and "Enable IPv6 configuration for this interface" (unchecked). Below these is a radio button for "Automatically obtain IP address settings with:" set to "dhcp". A "DHCP Settings" section contains a "Hostname (optional)" field and a checked checkbox for "Automatically obtain DNS information from provider". The "Statically set IP addresses:" radio button is selected. Below it is a "Manual IP Address Settings" section with three fields: "Address" (192.168.3.37), "Subnet mask" (255.255.255.0), and "Default gateway address" (192.168.3.1). At the bottom right are "OK" and "Cancel" buttons.

Be sure the 'Activate device when computer starts' is checked. Your unit may have the 'Automatically obtain IP address settings with:' selected. You want to select (as shown above) 'Statically set IP address'. Then fill in the appropriate values.

Press 'OK', you will return to the Network Configuration screen.

Configuring the DCS Network

Now select the DNS tab.



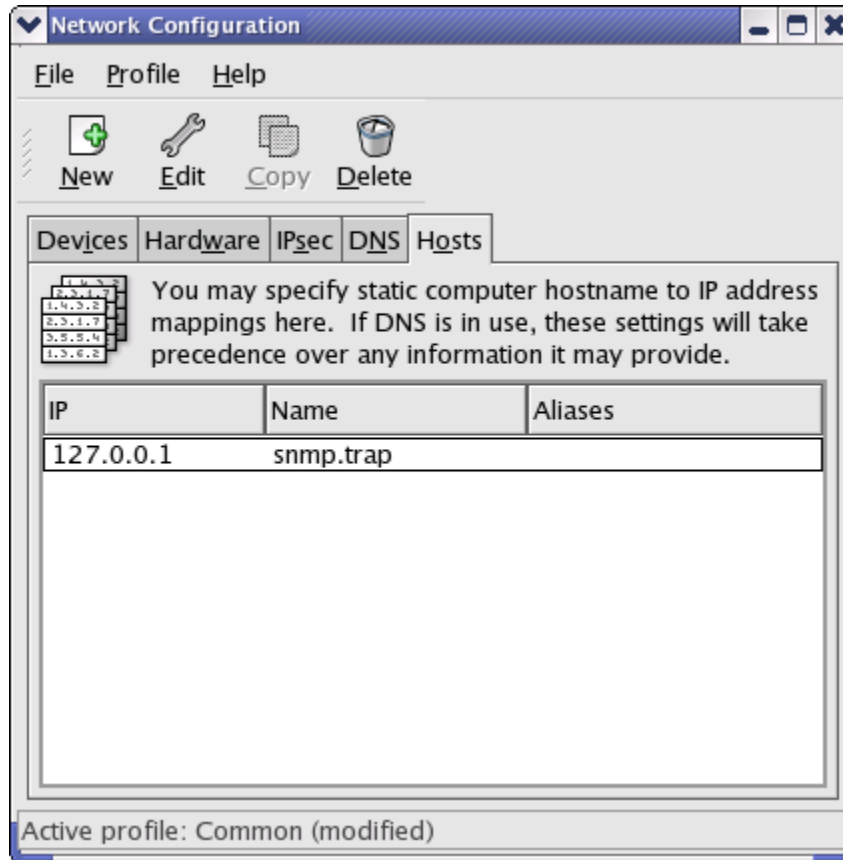
The Hostname field should already be filled in, but you may enter a new name if you wish. You should fill in at least one of the DNS IP address. If you don't know your DNS search path, leave it blank. (The search path is typically everything after the first dot in the hostname – the above hostname has no path. For example, video@x.y.com would have a path of x.y.com)

What happens if I don't set a DNS address? Not setting a DNS address, or setting it incorrectly, may result in the DCS being very slow (30 – 60 seconds) to respond to network requests. Your network administrator should be able to give you the DNS settings.

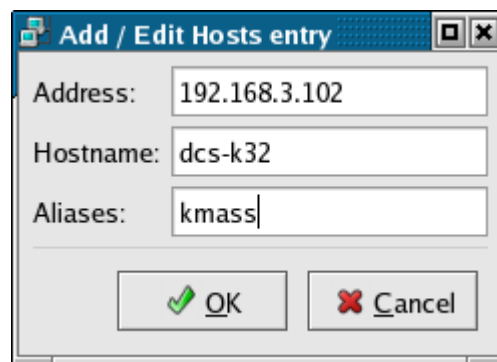
Finally, select the Hosts tab.

Configuring the DCS Network

In this section you will enter the hostnames of the DCS's and their IP addresses.



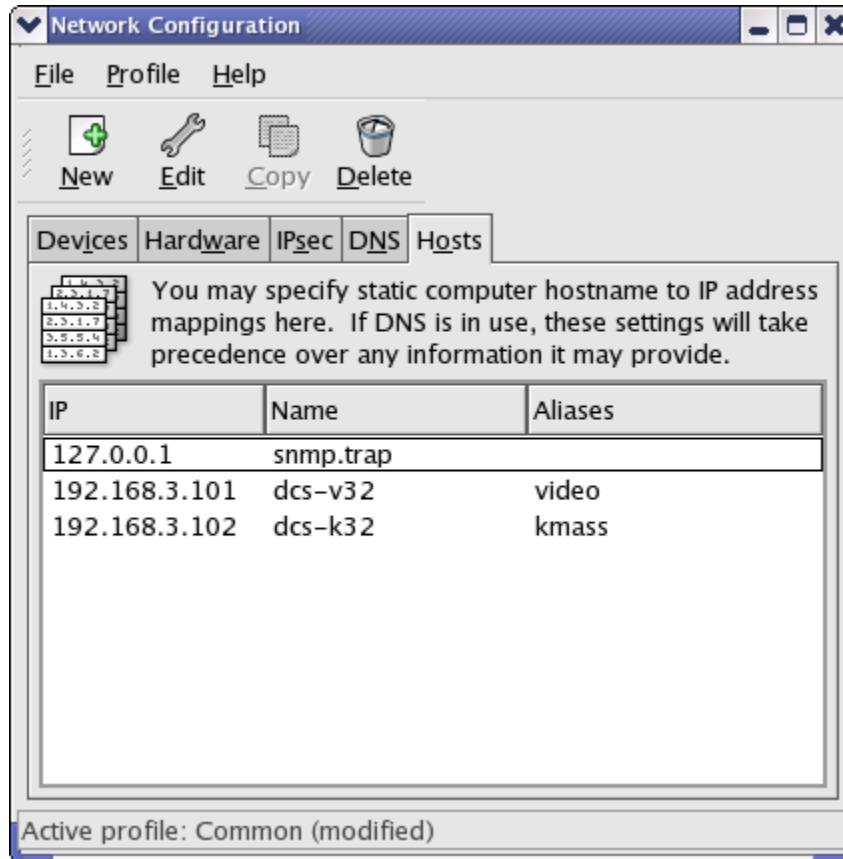
Select New, and enter the IP address and hostname of each DCS. It is important that this file be correct, because this is where the DCS Web interface converts chassis names to IP addresses.



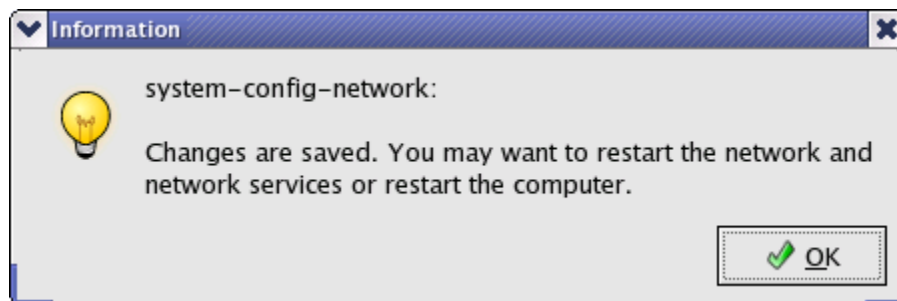
Press 'OK'. You should enter the IP address and Hostname for each DCS.

Configuring the DCS Network

Here is a system that has 2 DCS units, 1 video and 1 KMASS. The name snmp.trap is reserved, it points to the server that will receive SNMP status and alert messages. In this case, the messages are keep locally (127.0.0.1 is a reserved IP address for local access only).

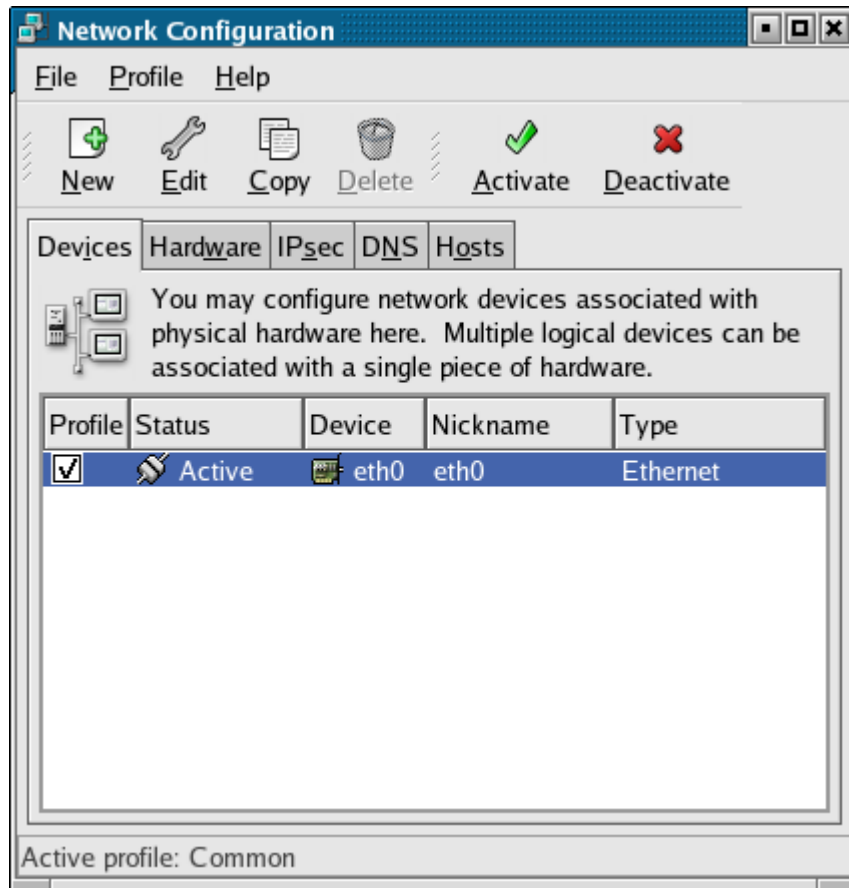


When finished, select File / Save, and the following will appear:



Configuring the DCS Network

To restart the network, select 'Deactivate' and then 'Activate'.



That's all, the DCS is now using the new network settings.